

2015

Press release

Regulated information
March



Group production

of The SIPEF group [in tonnes]

Palm Oil	2015					2014					YoY Variation	
	Q1	Q2	Q3	Q4	YTD	Q1	Q2	Q3	Q4	YTD	Q1	YTD
Own												
Tolan Tiga Group	13 146				13 146	15 120				15 120	-13,06%	-13,06%
UMW/TUM Group	5 240				5 240	2 809				2 809	86,54%	86,54%
Agro Muko	16 033				16 033	19 026				19 026	-15,73%	-15,73%
Hargy Oil Palms	14 204				14 204	13 326				13 326	6,59%	6,59%
Total own	48 623	0	0	0	48 623	50 281	0	0	0	50 281	-3,30%	-3,30%
Outgrowers												
Tolan Tiga Group	0				0	103				103	-100,00%	-100,00%
UMW/TUM Group	37				37	0				0	-	-
Agro Muko	358				358	412				412	-13,11%	-13,11%
Hargy Oil Palms	11 524				11 524	11 207				11 207	2,83%	2,83%
Total outgrowers	11 919	0	0	0	11 919	11 722	0	0	0	11 722	1,68%	1,68%
Total Palm Oil	60 542	0	0	0	60 542	62 003	0	0	0	62 003	-2,36%	-2,36%
Palm Kernels												
Own												
Tolan Tiga Group	3 215				3 215	3 671				3 671	-12,42%	-12,42%
UMW/TUM Group	874				874	744				744	17,47%	17,47%
Agro Muko	3 797				3 797	4 312				4 312	-11,94%	-11,94%
Total own	7 886	0	0	0	7 886	8 727	0	0	0	8 727	-9,64%	-9,64%
Outgrowers												
Tolan Tiga Group	0				0	27				27	-100,00%	-100,00%
UMW/TUM Group	6				6	0				0	-	-
Agro Muko	69				69	80				80	-13,75%	-13,75%
Total outgrowers	75	0	0	0	75	107	0	0	0	107	-29,91%	-29,91%
Total Palm Kernels	7 961	0	0	0	7 961	8 834	0	0	0	8 834	-9,88%	-9,88%
Palm Kernels Oil												
Own												
Hargy Oil Palms	1 073				1 073	1 037				1 037	3,47%	3,47%
Total own	1 073	0	0	0	1 073	1 037	0	0	0	1 037	3,47%	3,47%
Outgrowers												
Hargy Oil Palms	918				918	869				869	5,64%	5,64%
Total outgrowers	918	0	0	0	918	869	0	0	0	869	5,64%	5,64%
Total Palm Kernel Oil	1 991	0	0	0	1 991	1 906	0	0	0	1 906	4,46%	4,46%

Group Production

of The SIPEF group [in tonnes]

Rubber	2015					2014					YoY Variation	
	Q1	Q2	Q3	Q4	YTD	Q1	Q2	Q3	Q4	YTD	Q1	YTD
Own												
Tolan Tiga Group	820				820	781				781	4,99%	4,99%
Melania	945				945	1 107				1 107	-14,63%	-14,63%
Agro Muko	504				504	414				414	21,74%	21,74%
Galley Reach	530				530	504				504	5,16%	5,16%
Total own	2 799	0	0	0	2 799	2 806	0	0	0	2 806	-0,25%	-0,25%
Outgrowers												
Agro Muko	0				0	0				0	-	-
Galley Reach	40				40	166				166	-75,90%	-75,90%
Total outgrowers	40	0	0	0	40	166	0	0	0	166	-75,90%	-75,90%
Total Rubber	2 839	0	0	0	2 839	2 972	0	0	0	2 972	-4,48%	-4,48%
Tea	Q1	Q2	Q3	Q4	YTD	Q1	Q2	Q3	Q4	YTD	Q1	YTD
Own												
Melania	740				740	652				652	13,50%	13,50%
Total own	740	0	0	0	740	652	0	0	0	652	13,50%	13,50%
Outgrowers												
Melania	0				0	0				0	-	-
Total outgrowers	0	0	0	0	0	0	0	0	0	0	-	-
Total Tea	740	0	0	0	740	652	0	0	0	652	13,50%	13,50%
Bananas	Q1	Q2	Q3	Q4	YTD	Q1	Q2	Q3	Q4	YTD	Q1	YTD
Azaguie	1 462				1 462	2 006				2 006	-27,12%	-27,12%
Agboville	2 900				2 900	2 926				2 926	-0,89%	-0,89%
Motobe	2 702				2 702	2 965				2 965	-8,87%	-8,87%
Total Bananas	7 064	0	0	0	7 064	7 897	0	0	0	7 897	-10,55%	-10,55%

Commodity Price Data

March 2015

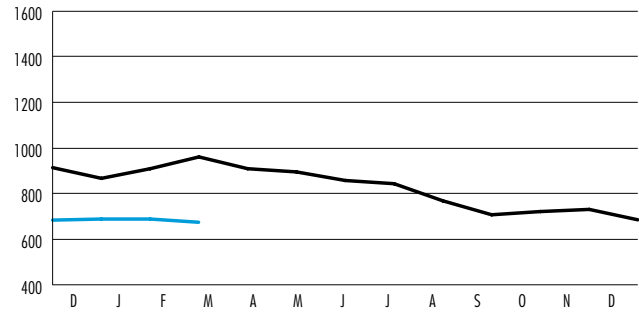
Average market prices

Product		YTD Q1/2015	YTD Q1/2014	YTD Q4/2014
CPO (CIF Rotterdam)	in \$/mt	684	911	821
CPKO (CIF Rotterdam)	in \$/mt	1 048	1 278	1 121
RSS3 (FOB Singapore)	in \$/mt	1 733	2 253	1 958
Tea (avg auct Mombasa)	in \$/mt	2 320	2 291	2 045
Bananas (FOT Europe)	in \$/mt	918	1 053	1 043

Crude Palm Oil in \$/mt

CIF Rotterdam

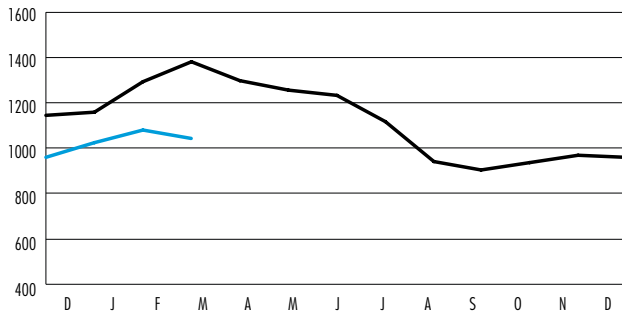
■ 2015 ■ 2014



Crude Palm Kernel Oil in \$/mt

CIF Rotterdam

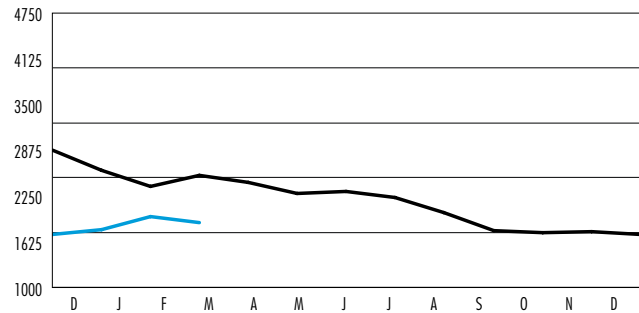
■ 2015 ■ 2014



RSS3 in \$/mt

FOB Singapore

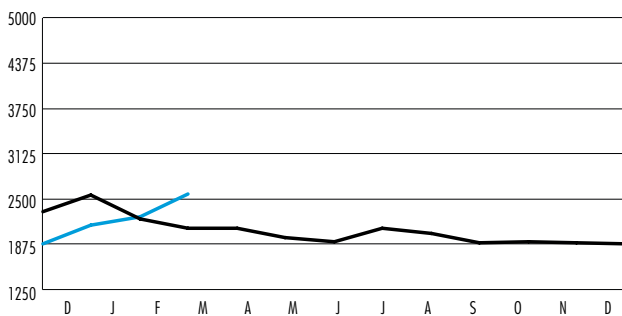
■ 2015 ■ 2014



Tea in \$/mt

average auct. Mombasa

■ 2015 ■ 2014



Bananas EU in \$/mt

■ 2015 ■ 2014

