



May 2013

## GROUP PRODUCTION - (in tonnes)

	2013					2012					YoY Variation	
	Q1	04-05	Q3	Q4	YTD	Q1	04-05	Q3	Q4	YTD	04-05	YTD
<b>Palm Oil</b>												
<b>Own</b>												
Tolan Tiga Group	13 111	9 567			22 678	14 323	9 655			23 978	-0,91%	-5,42%
UMW/TUM Group	2 079	1 811			3 890	769	769			1 538	135,49%	152,92%
Agro Muko	17 961	11 617			29 578	19 359	12 883			32 242	-9,82%	-8,26%
Hargy Oil Palms	11 924	9 928			21 852	12 521	9 056			21 577	9,63%	1,27%
<b>Total own</b>	<b>45 075</b>	<b>32 923</b>	<b>0</b>	<b>0</b>	<b>77 998</b>	<b>46 972</b>	<b>32 363</b>	<b>0</b>	<b>0</b>	<b>79 335</b>	<b>1,73%</b>	<b>-1,68%</b>
<b>Outgrowers</b>												
Tolan Tiga Group	48	31			79					0		
Agro Muko	306	255			561	314	284			598	-10,08%	-6,12%
Hargy Oil Palms	10 828	9 026			19 854	11 299	7 790			19 089	15,86%	4,01%
<b>Total outgrowers</b>	<b>11 182</b>	<b>9 312</b>	<b>0</b>	<b>0</b>	<b>20 494</b>	<b>11 613</b>	<b>8 074</b>	<b>0</b>	<b>0</b>	<b>19 687</b>	<b>15,33%</b>	<b>4,10%</b>
<b>Total Palm Oil</b>	<b>56 257</b>	<b>42 235</b>	<b>0</b>	<b>0</b>	<b>98 492</b>	<b>58 585</b>	<b>40 437</b>	<b>0</b>	<b>0</b>	<b>99 022</b>	<b>4,45%</b>	<b>-0,53%</b>
<b>Palm Kernels</b>												
<b>Own</b>												
Tolan Tiga Group	3 213	2 310			5 523	3 587	2 293			5 880	0,73%	-6,07%
UMW/TUM Group	550	480			1 030	204	203			407	136,32%	153,00%
Agro Muko	4 274	2 507			6 781	4 431	2 871			7 302	-12,69%	-7,14%
<b>Total own</b>	<b>8 037</b>	<b>5 297</b>	<b>0</b>	<b>0</b>	<b>13 334</b>	<b>8 222</b>	<b>5 368</b>	<b>0</b>	<b>0</b>	<b>13 590</b>	<b>-1,32%</b>	<b>-1,88%</b>
<b>Outgrowers</b>												
Tolan Tiga Group	13	15			28					0		
Agro Muko	60	50			110	61	54			115	-7,92%	-4,60%
<b>Total outgrowers</b>	<b>73</b>	<b>65</b>	<b>0</b>	<b>0</b>	<b>138</b>	<b>61</b>	<b>54</b>	<b>0</b>	<b>0</b>	<b>115</b>	<b>19,71%</b>	<b>19,69%</b>
<b>Total Palm Kernels</b>	<b>8 110</b>	<b>5 362</b>	<b>0</b>	<b>0</b>	<b>13 472</b>	<b>8 283</b>	<b>5 422</b>	<b>0</b>	<b>0</b>	<b>13 705</b>	<b>-1,11%</b>	<b>-1,70%</b>
<b>Palm Kernel Oil</b>												
<b>Own</b>												
Hargy Oil Palms	919	786			1 705	892	700			1 592	12,25%	7,08%
<b>Total own</b>	<b>919</b>	<b>786</b>	<b>0</b>	<b>0</b>	<b>1 705</b>	<b>892</b>	<b>700</b>	<b>0</b>	<b>0</b>	<b>1 592</b>	<b>12,25%</b>	<b>7,08%</b>
<b>Outgrowers</b>												
Hargy Oil Palms	839	720			1 559	807	605			1 412	19,05%	10,43%
<b>Total outgrowers</b>	<b>839</b>	<b>720</b>	<b>0</b>	<b>0</b>	<b>1 559</b>	<b>807</b>	<b>605</b>	<b>0</b>	<b>0</b>	<b>1 412</b>	<b>19,05%</b>	<b>10,43%</b>
<b>Total Palm Kernel Oil</b>	<b>1 758</b>	<b>1 506</b>	<b>0</b>	<b>0</b>	<b>3 264</b>	<b>1 699</b>	<b>1 305</b>	<b>0</b>	<b>0</b>	<b>3 004</b>	<b>15,40%</b>	<b>8,66%</b>

2013						2012					YoY Variation	
Rubber	Q1	04-05	Q3	Q4	YTD	Q1	04-05	Q3	Q4	YTD	04-05	YTD
<b>Own</b>												
Tolan Tiga Group	757	323			1 080	769	330			1 099	-2,06%	-1,71%
Melania	982	736			1 718	859	703			1 562	4,76%	10,02%
Agro Muko	343	254			597	368	247			615	2,83%	-2,93%
Galley Reach	431	286			717	502	361			863	-20,77%	-16,91%
<b>Total own</b>	<b>2 513</b>	<b>1 599</b>	<b>0</b>	<b>0</b>	<b>4 112</b>	<b>2 498</b>	<b>1 640</b>	<b>0</b>	<b>0</b>	<b>4 138</b>	<b>-2,52%</b>	<b>-0,64%</b>
<b>Outgrowers</b>												
Agro Muko					0					0		
Galley Reach	119	109			228	328	152			480	-28,31%	-52,51%
<b>Total outgrowers</b>	<b>119</b>	<b>109</b>	<b>0</b>	<b>0</b>	<b>228</b>	<b>328</b>	<b>152</b>	<b>0</b>	<b>0</b>	<b>480</b>	<b>-28,31%</b>	<b>-52,51%</b>
<b>Total Rubber</b>	<b>2 632</b>	<b>1 708</b>	<b>0</b>	<b>0</b>	<b>4 340</b>	<b>2 826</b>	<b>1 792</b>	<b>0</b>	<b>0</b>	<b>4 618</b>	<b>-4,71%</b>	<b>-6,03%</b>
<b>Tea</b>												
Tea	Q1	04-05	Q3	Q4	YTD	Q1	04-05	Q3	Q4	YTD	04-05	YTD
<b>Own</b>												
Melania	705	465			1 170	654	483			1 137	-3,70%	2,91%
<b>Total own</b>	<b>705</b>	<b>465</b>	<b>0</b>	<b>0</b>	<b>1 170</b>	<b>654</b>	<b>483</b>	<b>0</b>	<b>0</b>	<b>1 137</b>	<b>-3,70%</b>	<b>2,91%</b>
<b>Outgrowers</b>												
Melania					0	16	11			27	-100,00%	-100,00%
<b>Total outgrowers</b>	<b>0</b>	<b>0</b>	<b>0</b>	<b>0</b>	<b>0</b>	<b>16</b>	<b>11</b>	<b>0</b>	<b>0</b>	<b>27</b>	<b>-100,00%</b>	<b>-100,00%</b>
<b>Total Tea</b>	<b>705</b>	<b>465</b>	<b>0</b>	<b>0</b>	<b>1 170</b>	<b>670</b>	<b>493</b>	<b>0</b>	<b>0</b>	<b>1 163</b>	<b>-5,76%</b>	<b>0,57%</b>
<b>Bananas</b>												
Bananas	Q1	04-05	Q3	Q4	YTD	Q1	04-05	Q3	Q4	YTD	04-05	YTD
Azaguie	1 279	1 061			2 340	983	1 294			2 277	-18,00%	2,77%
Agboville	2 722	1 466			4 188	2 384	1 809			4 193	-18,93%	-0,11%
Motobe	2 415	1 327			3 742	3 024	2 700			5 724	-50,86%	-34,63%
<b>Total Bananas</b>	<b>6 416</b>	<b>3 854</b>	<b>0</b>	<b>0</b>	<b>10 270</b>	<b>6 391</b>	<b>5 803</b>	<b>0</b>	<b>0</b>	<b>12 194</b>	<b>-33,58%</b>	<b>-15,78%</b>

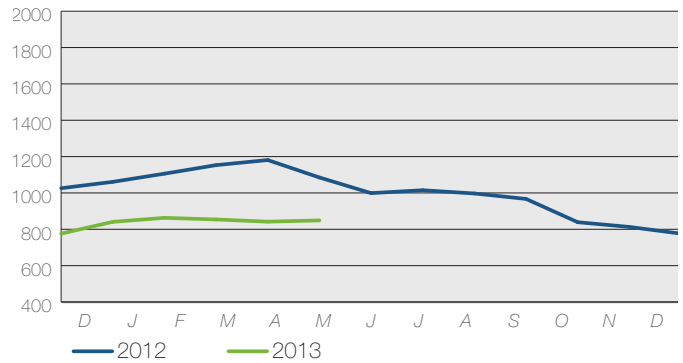
# COMMODITY PRICE DATA - (May 2013)

## Average market prices

Product		YTD 05/2013	YTD 05/2012	YTD Q4/2012
CPO (CIF Rotterdam)	in \$/mt	850	1 117	999
CPKO (CIF Rotterdam)	in \$/mt	826	1 346	1 110
RSS3 (FOB Singapore)	in Uscts/mt	3 074	3 826	3 377
Tea (FOB origin)	in \$/mt	2 940	2 690	2 900
Bananas (FOT Europe)	in \$/mt	1 089	1 178	1 100

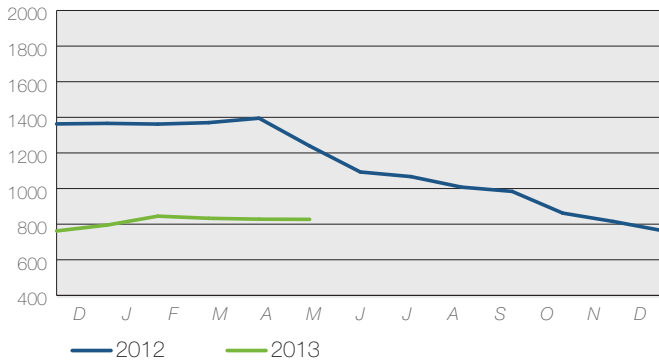
## Crude Palm Oil in \$/mt

CIF Rotterdam



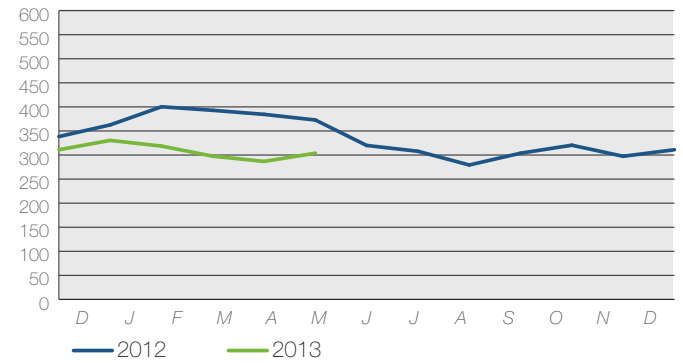
## Crude Palm Kernel Oil in \$/mt

CIF Rotterdam



## RSS3 in UScts/kg

FOB Singapore



## Tea in \$/kg FOB

average auct. Colombo / Kolkata / Mombasa



## Bananas EU in \$/mt

