



March 2013

## GROUP PRODUCTION - (in tonnes)

	2013					2012					YoY Variation	
	Q1	Q2	Q3	Q4	YTD	Q1	Q2	Q3	Q4	YTD	Q1	YTD
<b>Palm Oil</b>												
<b>Own</b>												
Tolan Tiga Group	13 111				13 111	14 323				14 323	-8,46%	-8,46%
UMW/TUM Group	2 079				2 079	769				769	170,35%	170,35%
Agro Muko	17 961				17 961	19 359				19 359	-7,22%	-7,22%
Hargy Oil Palms	11 924				11 924	12 521				12 521	-4,77%	-4,77%
<b>Total own</b>	<b>45 075</b>	<b>0</b>	<b>0</b>	<b>0</b>	<b>45 075</b>	<b>46 972</b>	<b>0</b>	<b>0</b>	<b>0</b>	<b>46 972</b>	<b>-4,04%</b>	<b>-4,04%</b>
<b>Outgrowers</b>												
Tolan Tiga Group	48				48					0		
Agro Muko	306				306	314				314	-2,55%	-2,55%
Hargy Oil Palms	10 828				10 828	11 299				11 299	-4,17%	-4,17%
<b>Total outgrowers</b>	<b>11 182</b>	<b>0</b>	<b>0</b>	<b>0</b>	<b>11 182</b>	<b>11 613</b>	<b>0</b>	<b>0</b>	<b>0</b>	<b>11 613</b>	<b>-3,71%</b>	<b>-3,71%</b>
<b>Total Palm Oil</b>	<b>56 257</b>	<b>0</b>	<b>0</b>	<b>0</b>	<b>56 257</b>	<b>58 585</b>	<b>0</b>	<b>0</b>	<b>0</b>	<b>58 585</b>	<b>-3,97%</b>	<b>-3,97%</b>
<b>Palm Kernels</b>												
<b>Own</b>												
Tolan Tiga Group	3 213				3 213	3 587				3 587	-10,43%	-10,43%
UMW/TUM Group	550				550	204				204	169,61%	169,61%
Agro Muko	4 274				4 274	4 431				4 431	-3,54%	-3,54%
<b>Total own</b>	<b>8 037</b>	<b>0</b>	<b>0</b>	<b>0</b>	<b>8 037</b>	<b>8 222</b>	<b>0</b>	<b>0</b>	<b>0</b>	<b>8 222</b>	<b>-2,25%</b>	<b>-2,25%</b>
<b>Outgrowers</b>												
Tolan Tiga Group	13				13					0		
Agro Muko	60				60	61				61	-1,64%	-1,64%
<b>Total outgrowers</b>	<b>73</b>	<b>0</b>	<b>0</b>	<b>0</b>	<b>73</b>	<b>61</b>	<b>0</b>	<b>0</b>	<b>0</b>	<b>61</b>	<b>19,67%</b>	<b>19,67%</b>
<b>Total Palm Kernels</b>	<b>8 110</b>	<b>0</b>	<b>0</b>	<b>0</b>	<b>8 110</b>	<b>8 283</b>	<b>0</b>	<b>0</b>	<b>0</b>	<b>8 283</b>	<b>-2,09%</b>	<b>-2,09%</b>
<b>Palm Kernel Oil</b>												
<b>Own</b>												
Hargy Oil Palms	919				919	892				892	3,03%	3,03%
<b>Total own</b>	<b>919</b>	<b>0</b>	<b>0</b>	<b>0</b>	<b>919</b>	<b>892</b>	<b>0</b>	<b>0</b>	<b>0</b>	<b>892</b>	<b>3,03%</b>	<b>3,03%</b>
<b>Outgrowers</b>												
Hargy Oil Palms	839				839	807				807	3,97%	3,97%
<b>Total outgrowers</b>	<b>839</b>	<b>0</b>	<b>0</b>	<b>0</b>	<b>839</b>	<b>807</b>	<b>0</b>	<b>0</b>	<b>0</b>	<b>807</b>	<b>3,97%</b>	<b>3,97%</b>
<b>Total Palm Kernel Oil</b>	<b>1 758</b>	<b>0</b>	<b>0</b>	<b>0</b>	<b>1 758</b>	<b>1 699</b>	<b>0</b>	<b>0</b>	<b>0</b>	<b>1 699</b>	<b>3,47%</b>	<b>3,47%</b>

	2013					2012					YoY Variation	
Rubber	Q1	Q2	Q3	Q4	YTD	Q1	Q2	Q3	Q4	YTD	Q1	YTD
<b>Own</b>												
Tolan Tiga Group	757				757	769				769	-1,56%	-1,56%
Melania	982				982	859				859	14,32%	14,32%
Agro Muko	343				343	368				368	-6,79%	-6,79%
Galley Reach	431				431	502				502	-14,14%	-14,14%
<b>Total own</b>	<b>2 513</b>	<b>0</b>	<b>0</b>	<b>0</b>	<b>2 513</b>	<b>2 498</b>	<b>0</b>	<b>0</b>	<b>0</b>	<b>2 498</b>	<b>0,60%</b>	<b>0,60%</b>
<b>Outgrowers</b>												
Agro Muko					0					0		
Galley Reach	119				119	328				328	-63,72%	-63,72%
<b>Total outgrowers</b>	<b>119</b>	<b>0</b>	<b>0</b>	<b>0</b>	<b>119</b>	<b>328</b>	<b>0</b>	<b>0</b>	<b>0</b>	<b>328</b>	<b>-63,72%</b>	<b>-63,72%</b>
<b>Total Rubber</b>	<b>2 632</b>	<b>0</b>	<b>0</b>	<b>0</b>	<b>2 632</b>	<b>2 826</b>	<b>0</b>	<b>0</b>	<b>0</b>	<b>2 826</b>	<b>-6,86%</b>	<b>-6,86%</b>
<b>Tea</b>	<b>Q1</b>	<b>Q2</b>	<b>Q3</b>	<b>Q4</b>	<b>YTD</b>	<b>Q1</b>	<b>Q2</b>	<b>Q3</b>	<b>Q4</b>	<b>YTD</b>	<b>Q1</b>	<b>YTD</b>
<b>Own</b>												
Melania	705				705	654				654	7,80%	7,80%
<b>Total own</b>	<b>705</b>	<b>0</b>	<b>0</b>	<b>0</b>	<b>705</b>	<b>654</b>	<b>0</b>	<b>0</b>	<b>0</b>	<b>654</b>	<b>7,80%</b>	<b>7,80%</b>
<b>Outgrowers</b>												
Melania					0	16				16	-100,00%	-100,00%
<b>Total outgrowers</b>	<b>0</b>	<b>0</b>	<b>0</b>	<b>0</b>	<b>0</b>	<b>16</b>	<b>0</b>	<b>0</b>	<b>0</b>	<b>16</b>	<b>-100,00%</b>	<b>-100,00%</b>
<b>Total Tea</b>	<b>705</b>	<b>0</b>	<b>0</b>	<b>0</b>	<b>705</b>	<b>670</b>	<b>0</b>	<b>0</b>	<b>0</b>	<b>670</b>	<b>5,22%</b>	<b>5,22%</b>
<b>Bananas</b>	<b>Q1</b>	<b>Q2</b>	<b>Q3</b>	<b>Q4</b>	<b>YTD</b>	<b>Q1</b>	<b>Q2</b>	<b>Q3</b>	<b>Q4</b>	<b>YTD</b>	<b>Q1</b>	<b>YTD</b>
Azaguie	1 279				1 279	983				983	30,11%	30,11%
Agboville	2 722				2 722	2 384				2 384	14,18%	14,18%
Motobe	2 415				2 415	3 024				3 024	-20,14%	-20,14%
<b>Total Bananas</b>	<b>6 416</b>	<b>0</b>	<b>0</b>	<b>0</b>	<b>6 416</b>	<b>6 391</b>	<b>0</b>	<b>0</b>	<b>0</b>	<b>6 391</b>	<b>0,39%</b>	<b>0,39%</b>

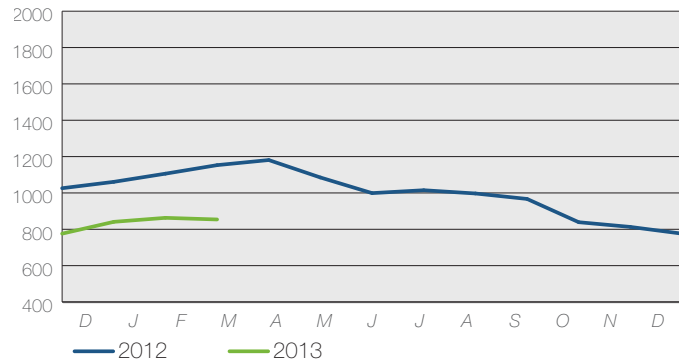
# COMMODITY PRICE DATA - (March 2013)

## Average market prices

Product		YTD Q1/2013	YTD Q1/2012	YTD Q4/2012
CPO (CIF Rotterdam)	in \$/mt	853	1.107	999
CPKO (CIF Rotterdam)	in \$/mt	824	1.366	1.110
RSS3 (FOB Singapore)	in Uscts/kg	3.155	3.853	3.377
Tea (FOB origin)	in \$/kg	2.940	2.550	2.900
Bananas (FOT Europe)	in \$/mt	1.148	1.143	1.100

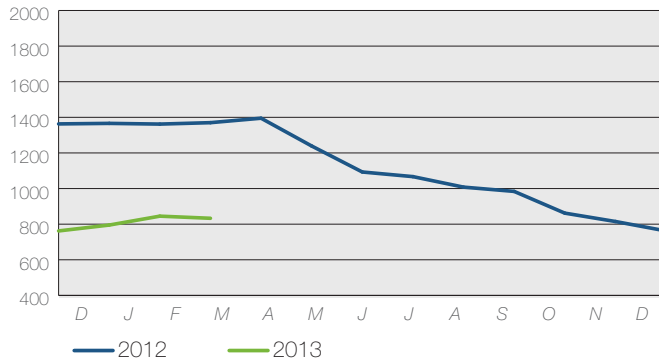
## Crude Palm Oil in \$/mt

CIF Rotterdam



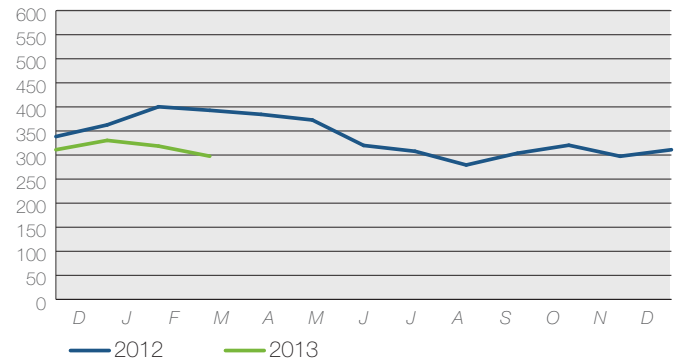
## Crude Palm Kernel Oil in \$/mt

CIF Rotterdam



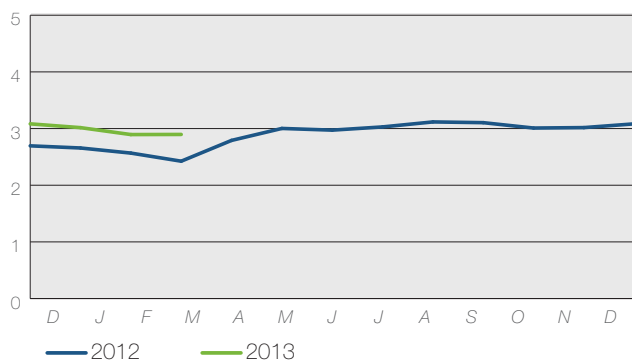
## RSS3 in UScts/kg

FOB Singapore



## Tea in \$/kg FOB

average auct. Colombo / Kolkata / Mombasa



## Bananas EU in \$/mt

