



June 2013

## GROUP PRODUCTION - (in tonnes)

	2013					2012					YoY Variation	
	Q1	Q2	Q3	Q4	YTD	Q1	Q2	Q3	Q4	YTD	Q2	YTD
<b>Palm Oil</b>												
<b>Own</b>												
Tolan Tiga Group	13 111	14 254			27 365	14 323	15 203			29 526	-6,24%	-7,32%
UMW/TUM Group	2 079	2 871			4 950	769	1 363			2 132	110,64%	132,18%
Agro Muko	17 961	18 518			36 479	19 359	20 251			39 610	-8,56%	-7,90%
Hargy Oil Palms	11 924	14 737			26 661	12 521	13 444			25 965	9,62%	2,68%
<b>Total own</b>	<b>45 075</b>	<b>50 380</b>	<b>0</b>	<b>0</b>	<b>95 455</b>	<b>46 972</b>	<b>50 261</b>	<b>0</b>	<b>0</b>	<b>97 233</b>	<b>0,24%</b>	<b>-1,83%</b>
<b>Outgrowers</b>												
Tolan Tiga Group	48	98			146					0	-	-
Agro Muko	306	422			728	314	468			782	-9,83%	-6,91%
Hargy Oil Palms	10 828	13 459			24 287	11 299	11 932			23 231	12,80%	4,55%
<b>Total outgrowers</b>	<b>11 182</b>	<b>13 979</b>	<b>0</b>	<b>0</b>	<b>25 161</b>	<b>11 613</b>	<b>12 400</b>	<b>0</b>	<b>0</b>	<b>24 013</b>	<b>12,73%</b>	<b>4,78%</b>
<b>Total Palm Oil</b>	<b>56 257</b>	<b>64 359</b>	<b>0</b>	<b>0</b>	<b>120 616</b>	<b>58 585</b>	<b>62 661</b>	<b>0</b>	<b>0</b>	<b>121 246</b>	<b>2,71%</b>	<b>-0,52%</b>
<b>Palm Kernels</b>												
<b>Own</b>												
Tolan Tiga Group	3 213	3 394			6 607	3 587	3 629			7 216	-6,48%	-8,44%
UMW/TUM Group	550	760			1 310	204	360			564	111,11%	132,27%
Agro Muko	4 274	4 011			8 285	4 431	4 518			8 949	-11,22%	-7,42%
<b>Total own</b>	<b>8 037</b>	<b>8 165</b>	<b>0</b>	<b>0</b>	<b>16 202</b>	<b>8 222</b>	<b>8 507</b>	<b>0</b>	<b>0</b>	<b>16 729</b>	<b>-4,02%</b>	<b>-3,15%</b>
<b>Outgrowers</b>												
Tolan Tiga Group	13	26			39					0	-	-
Agro Muko	60	84			144	61	91			152	-7,69%	-5,26%
<b>Total outgrowers</b>	<b>73</b>	<b>110</b>	<b>0</b>	<b>0</b>	<b>183</b>	<b>61</b>	<b>91</b>	<b>0</b>	<b>0</b>	<b>152</b>	<b>20,88%</b>	<b>20,39%</b>
<b>Total Palm Kernels</b>	<b>8 110</b>	<b>8 275</b>	<b>0</b>	<b>0</b>	<b>16 385</b>	<b>8 283</b>	<b>8 598</b>	<b>0</b>	<b>0</b>	<b>16 881</b>	<b>-3,76%</b>	<b>-2,94%</b>
<b>Palm Kernel Oil</b>												
<b>Own</b>												
Hargy Oil Palms	919	1 134			2 053	892	1 014			1 906	11,83%	7,71%
<b>Total own</b>	<b>919</b>	<b>1 134</b>	<b>0</b>	<b>0</b>	<b>2 053</b>	<b>892</b>	<b>1 014</b>	<b>0</b>	<b>0</b>	<b>1 906</b>	<b>11,83%</b>	<b>7,71%</b>
<b>Outgrowers</b>												
Hargy Oil Palms	839	1 045			1 884	807	906			1 713	15,34%	9,98%
<b>Total outgrowers</b>	<b>839</b>	<b>1 045</b>	<b>0</b>	<b>0</b>	<b>1 884</b>	<b>807</b>	<b>906</b>	<b>0</b>	<b>0</b>	<b>1 713</b>	<b>15,34%</b>	<b>9,98%</b>
<b>Total Palm Kernel Oil</b>	<b>1 758</b>	<b>2 179</b>	<b>0</b>	<b>0</b>	<b>3 937</b>	<b>1 699</b>	<b>1 920</b>	<b>0</b>	<b>0</b>	<b>3 619</b>	<b>13,49%</b>	<b>8,79%</b>

2013						2012					YoY Variation	
Rubber	Q1	Q2	Q3	Q4	YTD	Q1	Q2	Q3	Q4	YTD	Q2	YTD
<b>Own</b>												
Tolan Tiga Group	757	557			1 314	769	581			1 350	-4,13%	-2,67%
Melania	982	1 113			2 095	859	1 082			1 941	2,87%	7,93%
Agro Muko	343	379			722	368	374			742	1,34%	-2,70%
Galley Reach	431	438			869	502	608			1 110	-27,96%	-21,71%
<b>Total own</b>	<b>2 513</b>	<b>2 487</b>	<b>0</b>	<b>0</b>	<b>5 000</b>	<b>2 498</b>	<b>2 645</b>	<b>0</b>	<b>0</b>	<b>5 143</b>	<b>-5,97%</b>	<b>-2,78%</b>
<b>Outgrowers</b>												
Agro Muko					0		6			6	-100,00%	-100,00%
Galley Reach	119	157			276	328	195			523	-19,49%	-47,23%
<b>Total outgrowers</b>	<b>119</b>	<b>157</b>	<b>0</b>	<b>0</b>	<b>276</b>	<b>328</b>	<b>201</b>	<b>0</b>	<b>0</b>	<b>529</b>	<b>-21,89%</b>	<b>-47,83%</b>
<b>Total Rubber</b>	<b>2 632</b>	<b>2 644</b>	<b>0</b>	<b>0</b>	<b>5 276</b>	<b>2 826</b>	<b>2 846</b>	<b>0</b>	<b>0</b>	<b>5 672</b>	<b>-7,10%</b>	<b>-6,98%</b>
<b>Tea</b>												
Tea	Q1	Q2	Q3	Q4	YTD	Q1	Q2	Q3	Q4	YTD	Q2	YTD
<b>Own</b>												
Melania	705	695			1 400	654	761			1 415	-8,67%	-1,06%
<b>Total own</b>	<b>705</b>	<b>695</b>	<b>0</b>	<b>0</b>	<b>1 400</b>	<b>654</b>	<b>761</b>	<b>0</b>	<b>0</b>	<b>1 415</b>	<b>-8,67%</b>	<b>-1,06%</b>
<b>Outgrowers</b>												
Melania					0	16	16			32	-100,00%	-100,00%
<b>Total outgrowers</b>	<b>0</b>	<b>0</b>	<b>0</b>	<b>0</b>	<b>0</b>	<b>16</b>	<b>16</b>	<b>0</b>	<b>0</b>	<b>32</b>	<b>-100,00%</b>	<b>-100,00%</b>
<b>Total Tea</b>	<b>705</b>	<b>695</b>	<b>0</b>	<b>0</b>	<b>1 400</b>	<b>670</b>	<b>777</b>	<b>0</b>	<b>0</b>	<b>1 447</b>	<b>-10,55%</b>	<b>-3,25%</b>
<b>Bananas</b>												
Bananas	Q1	Q2	Q3	Q4	YTD	Q1	Q2	Q3	Q4	YTD	Q2	YTD
Azaguie	1 279	1 580			2 859	983	1 556			2 539	1,54%	12,60%
Agboville	2 722	2 015			4 737	2 384	2 199			4 583	-8,37%	3,36%
Motobe	2 415	1 812			4 227	3 024	3 240			6 264	-44,07%	-32,52%
<b>Total Bananas</b>	<b>6 416</b>	<b>5 407</b>	<b>0</b>	<b>0</b>	<b>11 823</b>	<b>6 391</b>	<b>6 995</b>	<b>0</b>	<b>0</b>	<b>13 386</b>	<b>-22,70%</b>	<b>-11,68%</b>

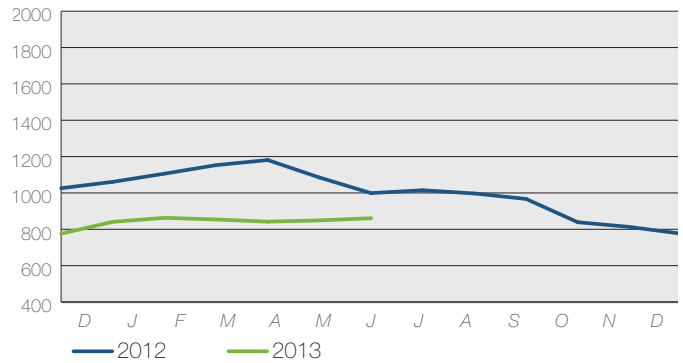
# COMMODITY PRICE DATA - (June 2013)

## Average market prices

Product		YTD Q2/2013	YTD Q2/2012	YTD Q4/2012
CPO (CIF Rotterdam)	in \$/mt	852	1 097	999
CPKO (CIF Rotterdam)	in \$/mt	831	1 304	1 110
RSS3 (FOB Singapore)	in Uscts/kg	303	372	338
Tea (FOB origin)	in \$/kg	2,91	2,74	2,90
Bananas (FOT Europe)	in \$/mt	1 084	1 157	1 099

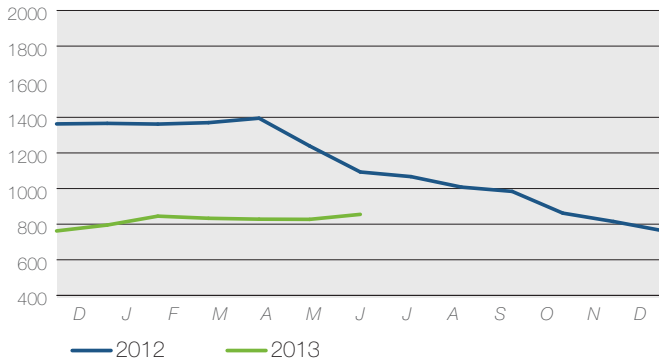
## Crude Palm Oil in \$/mt

CIF Rotterdam



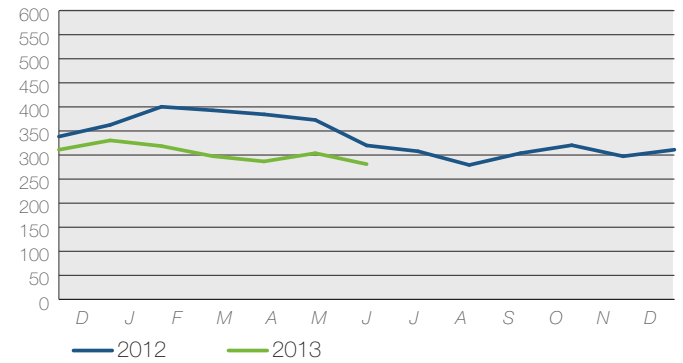
## Crude Palm Kernel Oil in \$/mt

CIF Rotterdam



## RSS3 in UScts/kg

FOB Singapore



## Tea in \$/kg FOB

average auct. Colombo / Kolkata / Mombasa



## Bananas EU in \$/mt

